



# RINOX



Landscape *Collection*





# Create *timeless* and complete landscape projects

---

Rinox offers a wide variety of versatile and functional products to refine your landscaping. Smooth or textured, modern or traditional, all Rinox landscape products are designed to fit perfectly together.



PROMA XL  
WHISTLER





FROM LEFT TO RIGHT:  
 Maria Correia, Sabrina Correia, Rosa Ciccarello, Horacio Correia, Jessye Correia and Bobby Correia.

# A local *family* business

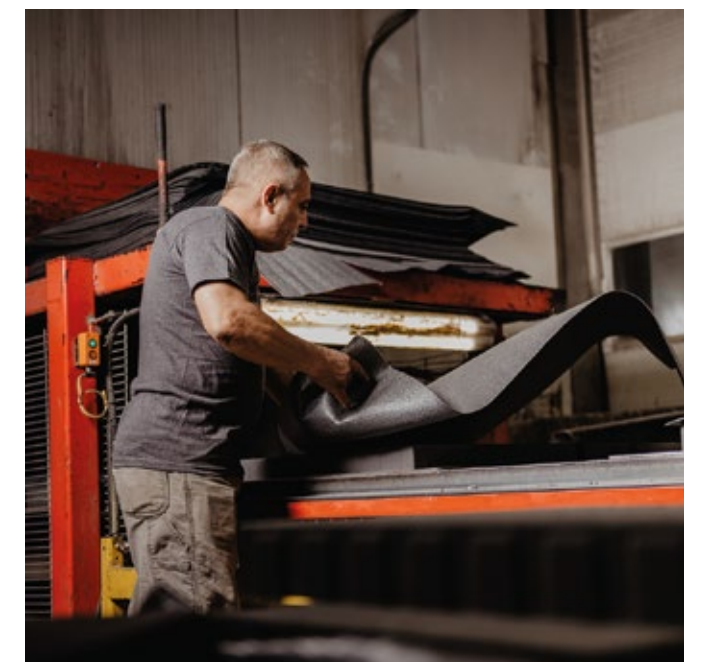
Rinox's success is largely due to the innovation and creativity demonstrated by its founders, Horacio Correia and Rosa Ciccarello. They have anchored the importance of family within their company. Today, their four children proudly participate in the success of the family business.

In addition, they are proud to continue their growth in their various activities within the Rinox Group, now counting 4 divisions, 5 manufacturing plants and more than 100 distribution centers. They would also like to salute the expertise and remarkable loyalty of their collaborators over the years.

*Thank you for being part of the big Rinox family.*

# Innovation and *distinction*

Rinox is a manufacturer of high-end, high-performance and prestigious concrete products for over 25 years. Three collections are offered: Landscaping, Masonry and Alternative Masonry. From the facade to the exterior design of a residential or commercial project, Rinox is your ally in terms of trend and quality in your construction project.



## MADE HERE

Rinox products are made locally. We offer cutting-edge concrete products whose components are stable and calibrated to perfection. Our aggregates come from a single location, which allows us to have precise and consistent formulas for each of our colors offered.



# All of our products meet industry standards



## STYLES

Recognized for its avant-garde products, Rinox has made it its mission to consistently and accurately respond to constantly changing market trends. Its natural stone-like products are undoubtedly the most remarkable and the most appreciated by customers.

## 30 PATENTS

Rinox has developed several unique and innovative products with patents. Inventions that facilitate installation and allow customers to have exclusive and superior products.

## TECHNOLOGY

RinoXtrem technology enables the production of exceptionally durable and ultra-vibrant, color-fade resistant products. A unique technology that stands out in the industry because the color is found throughout and within the product.

Our products are designed in a meticulously controlled environment. We carefully observe humidity and density levels and rigorously analyze all factors surrounding the production process. The integrity of our colors is due to the perfect blend of quality control and the high performance of our state-of-the-art equipment.



# Resource center



What type of customer are you ?

On our Rinox Website you can find all the information you need to help you with your projects! Design advice, catalogs and technical sheets; several tools are available for you.

**DISCOVER OUR RESOURCE CENTER:**





# New redesigned *Website*

A few months after its 25th-anniversary, Rinox released a new Website with a new brand image. The new Web platform is optimized to create an intuitive customer experience.

To reflect the continuous evolution of the company, Rinox has completely redesigned and refreshed the look for a better user experience. The ultimate goal of this new Website is to guide the user in their needs or desires, as a professional or homeowner, through practical and intuitive navigation.

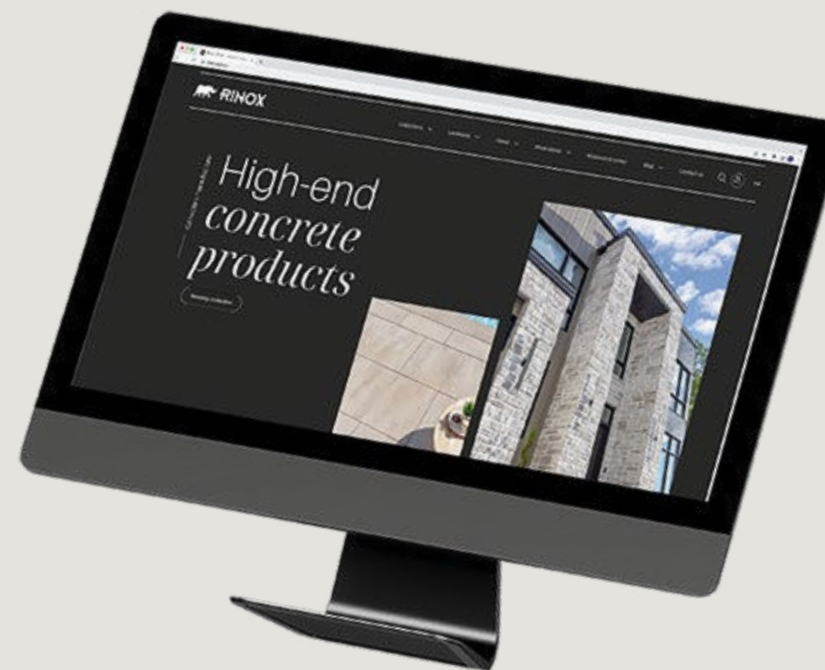
DISCOVER OUR NEW WEBSITE:



RINOX.COM



PROMA, ORA AND SOLINO  
COLLECTION  
OKA BEIGE







**PROMA XL**  
OKA BEIGE & CAVIAR  
**AQUARINO 1232 LOUNGE**  
SEA SALT

# What to know before starting a project ?

The planning of a landscaping project involves several stages, and it is important to be organized and to be familiar with the various phases. Even if most people turn to professionals, some details can be checked

and planned on your behalf before the process is initiated! As a homeowner, here's what you need to know before diving into your outdoor landscaping project!

## FIND INSPIRATION

Just like interior decorating, outdoor landscaping can be designed according to a specific style, considering the texture, shape, and color of the selected materials. To get started, identify the style that suits you best by exploring our Lookbook, where you can find inspiration and discover what appeals to you the most.

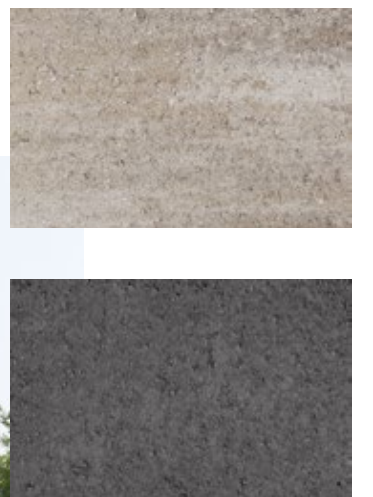
## CHOICE OF MATERIALS

If you're looking to landscape your backyard, you'll need to choose from a selection of slabs. In the case of your front driveway, this would involve the paver collection. As a result, the installation time can vary and may impact the landscaping team's schedule.

## CREATING A PLAN

The key to a successful outdoor landscaping project is to create a scale plan of your space. That way, your desires and ideas will be on paper, and you can ensure that all elements fit together with the help of your landscaper.

Consult the blog:



**OXFORD STONE**  
WHISTLER  
**PROMA XL**  
OKA BEIGE



NEW

# Fresh new products



OKUTA PATH STONE  
HUSKY

## NEW OKUTA PATH STONE

Okuta, the new pathway stone, characterized by its modern aesthetic and unique rounded edge, paves the way for endless creative possibilities for landscapers. Its integration into the landscaping collection

provides an exceptional solution for creating outdoor spaces that are both contemporary and innovative, thereby redefining the landscaping design experience.



PROMA  
HUSKY

# Introducing new colors

The introduction of these new colors significantly expands the color options available. These carefully selected contemporary shades add a captivating dimension to the landscape collection. Whether to create vibrant and bold spaces or more subtle and sophisticated atmospheres, these new colors open the door to limitless creativity in the field of landscape design.



Consult  
the blog:







PROMA XL  
WHISTLER

# Table of contents

## SLABS

ASPEN	P_20
CAPRI	P_22
PROMA BARRETTE	P_23
PROMA	P_24
PROMA XL	P_26
PROMA QUADRA	P_30
PROMA 3XL	P_32
ZUKO GRANDE	P_34

## PAVERS

ASPEN	P_38
CAPRI	P_40
PROMA BARRETTE	P_41
PROMA	P_42
PROMA XL	P_44
PROMA QUADRA	P_46
PROMA 3XL	P_48
VENZA	P_50
ZUKO GRANDE	P_52

## ACCESSORIES

ORA - WALL	P_56
SOLINO - WALL	P_58
DESIGNING YOUR OWN FIREPLACE	P_60
ORA - STEP	P_62
PROMA - STEP	P_66
SOLINO - COLUMN	P_68
SOLINO - COPING	P_69
PROMA XL - COPING	P_70
SPHERIK - COPING	P_72
VIVA GRANDE - COPING	P_73
OKUTA - PATH STONE	P_74
GARDEN - PATH STONE	P_76
JAPANESE - PATH STONE	P_77

## RINOX GROUP

AQUARINO	P_80
RIALUX	P_84
GARAGE-X	P_86

## CHARTS

COLOR CHART	P_88
TECHNICAL INFORMATION CHART	P_92

## WARRANTY

P\_96



# Slabs

Perfect for  
your residential  
*backyards*

Aspen

Capri

Proma Barrette

Proma

Proma XL

Proma Quadra

Proma 3XL

Zuko Grande



PROMA QUADRA  
MIST

ORA STEP  
MIST



# Spectacular Designs

This project, featuring the renowned Prama collection, is breathtaking.

Luxurious outdoor kitchen, a spacious inground pool, and an original landscape design make this achievement a success on all levels. Every element has been meticulously chosen to create a friendly and inviting space. This prestigious oasis blends comfort and refinement for an unparalleled outdoor living experience.



**PROMA, ORA AND SOLINO COLLECTION**  
OKA BEIGE

DISCOVER OUR LOOKBOOK:



[RINOX.COM](https://www.rinox.com)

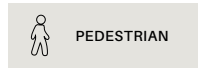


**PROMA XL WHISTLER**





# ASPEN



**ASPEN**  
ASH CHARCOAL

A



B



C



**ASPEN**

1 15/16" x 5 7/8" x 11 3/4"

50mm x 149mm x 299mm

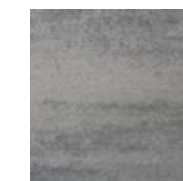
1 15/16" x 11 3/4" x 11 3/4"

50mm x 299mm x 299mm

1 15/16" x 11 3/4" x 17 11/16"

50mm x 299mm x 449mm

STANDARD

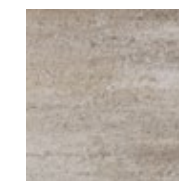


ASH CHARCOAL



CANYON

PREMIUM



OKA BEIGE



CAVIAR  
MIDNIGHT BLACK

- 12 rows
- 11.54 ft<sup>2</sup> per row
- 138.5 ft<sup>2</sup> per skid
- 141.69 lin.ft per skid
- 3280 lbs

The Aspen slab is perfect for your *contemporary* outdoor spaces.

**ASPEN**  
ASH CHARCOAL





# CAPRI



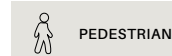
STANDARD	PREMIUM	PRESTIGE*
ASH CHARCOAL	OKA BEIGE SKY GREY	HUSKY

**CAPRI**  
ASH CHARCOAL

A	B	C
<b>CAPRI</b> 2 3/8" x 8" x 16" 60mm x 203mm x 406mm	<b>CAPRI</b> 2 3/8" x 16" x 16" 60mm x 406mm x 406mm	<b>CAPRI</b> 2 3/8" x 16" x 24" 60mm x 406mm x 609mm

10 rows  
10.66 ft<sup>2</sup> per row  
106.6 ft<sup>2</sup> per skid  
80 lin.ft per skid  
3000 lbs

# PROMA BARRETTE



STANDARD	PREMIUM	PRESTIGE*
ASH CHARCOAL	CAVIAR *MIDNIGHT BLACK TRUFFLE *SPECIAL ORDER VOLCANO	HUSKY

**PROMA BARRETTE**  
CAVIAR

A
<b>PROMA BARRETTE 60MM</b> 2 3/8" x 4" x 18" 60mm x 102mm x 457mm

8 rows  
20 units per row  
160 units per skid  
240 lin.ft per skid  
2260 lbs

\*Prestige: A color that must be meticulously maintained and used in a specific environment to preserve its appearance. See warranty.



# PROMA



PROMA  
HUSKY

A



B



C



**PROMA**

2 3/8" x 8" x 16"

60mm x 203mm x 406mm

2 3/8" x 16" x 16"

60mm x 406mm x 406mm

2 3/8" x 16" x 24"

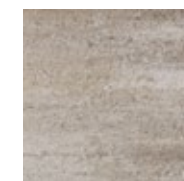
60mm x 406mm x 609mm

STANDARD



ASH CHARCOAL

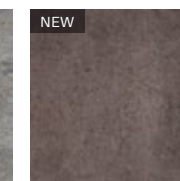
PREMIUM



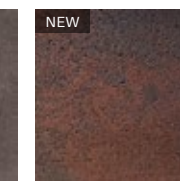
OKA BEIGE



SKY GREY

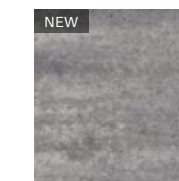


TRUFFLE  
\*SPECIAL ORDER

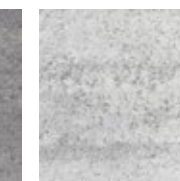


VOLCANO

PRESTIGE\*



HUSKY



MIST

10 rows

10.66 ft<sup>2</sup> per row

106.6 ft<sup>2</sup> per skid

80 lin.ft per skid

3000 lbs

The Proma slabs *versatility* is its biggest differentiating factor.

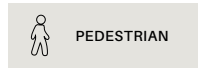
PROMA  
HUSKY



\*Prestige: A color that must be meticulously maintained and used in a specific environment to preserve its appearance. See warranty.



# PROMA XL

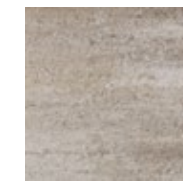


STANDARD



ASH CHARCOAL

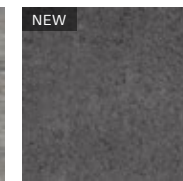
PREMIUM



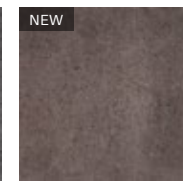
OKA BEIGE



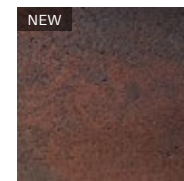
SKY GREY



CAVIAR  
\*MIDNIGHT BLACK

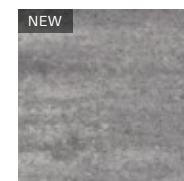


TRUFFLE  
\*SPECIAL ORDER



VOLCANO

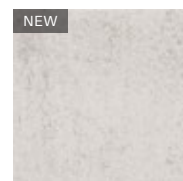
PRESTIGE\*



HUSKY



MIST



WHISTLER



**PROMA XL**  
SKY GREY & WHISTLER

**PROMA XL**  
SKY GREY & CAVIAR

A



**PROMA XL**

2 3/8" x 16" x 32"

60mm x 406mm x 812mm

10 rows
10.66 ft <sup>2</sup> per row
106.6 ft <sup>2</sup> per skid
80 lin.ft per skid
3050 lbs

This slab is the perfect choice for a *modern* backyard project.

\*Prestige: A color that must be meticulously maintained and used in a specific environment to preserve its appearance. See warranty.



# Best seller Proma XL

The Proma XL is distinguished by its modern look and smooth finish. This product is a wise choice for creating an outdoor dream backyard.

It offers great installation versatility and can be arranged in a linear pattern or the increasingly popular chevron pattern. The Proma XL is a favorite in our slab and paver collection.



PROMA XL  
WHISTLER

DISCOVER OUR LOOKBOOK:

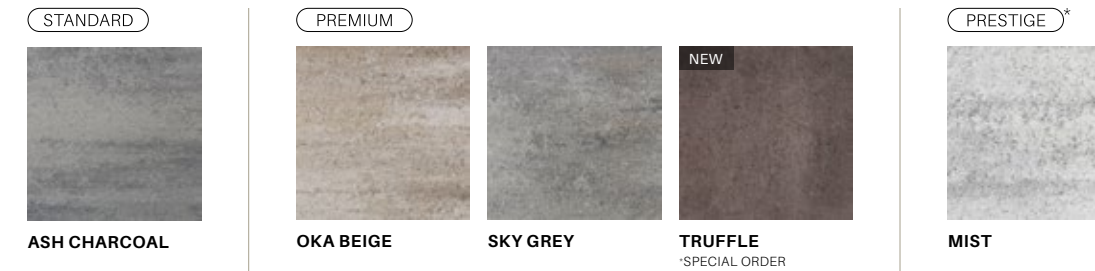


RINOX.COM





# PROMA QUADRA



12 rows  
 7.1 ft<sup>2</sup> per row  
 85.2 ft<sup>2</sup> per skid  
 32 lin.ft per skid  
 2440 lbs

The Proma Quadra slab stands out for its *symmetry* and oversized dimension.



**PROMA QUADRA**  
 OKA BEIGE  
**AQUARINO 1025 BEACH**  
 ARCTIC GREY

A



**PROMA QUADRA**

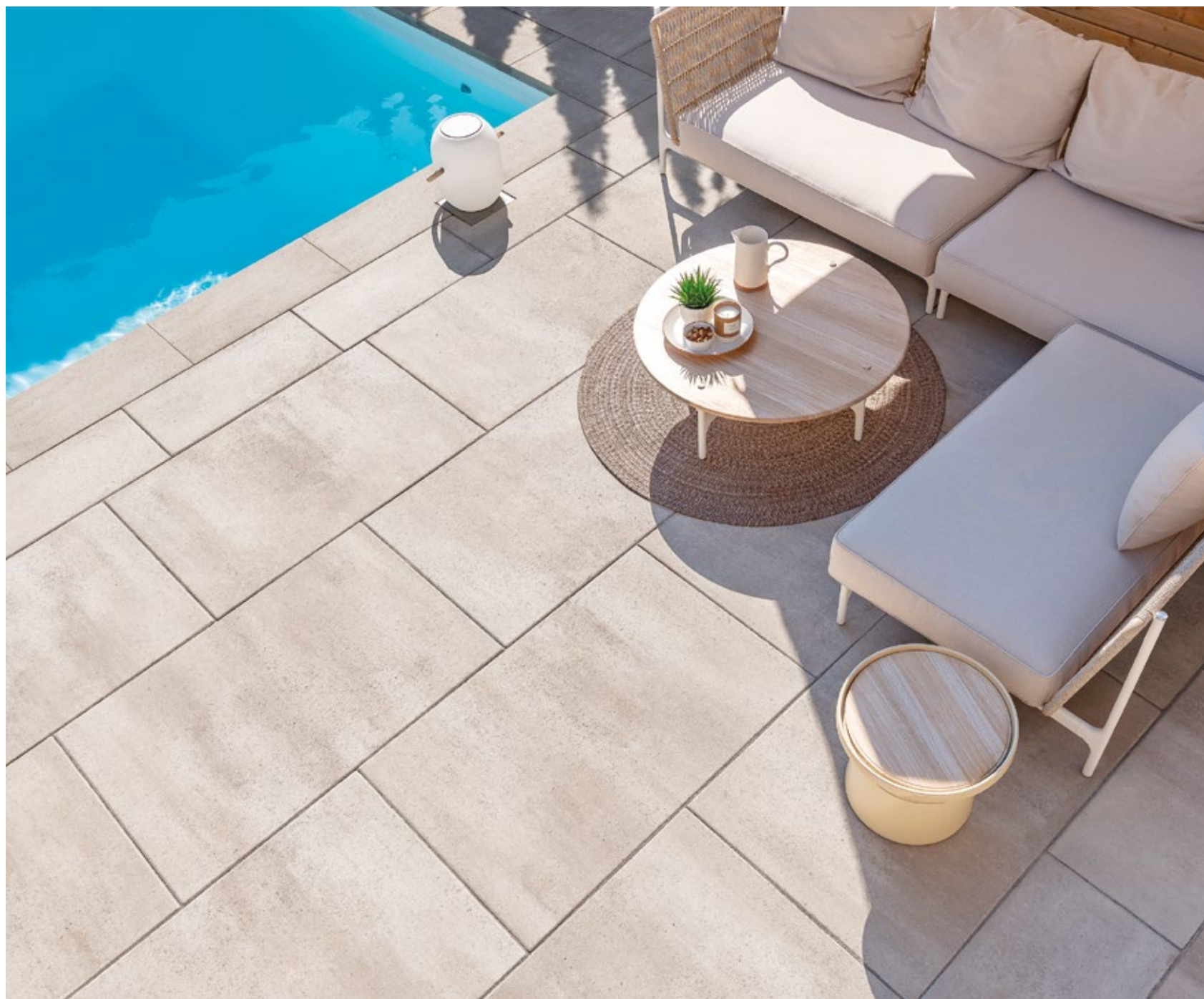
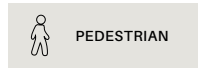
2 3/8" x 32" x 32"

60mm x 812mm x 812mm

\*Prestige: A color that must be meticulously maintained and used in a specific environment to preserve its appearance. See warranty.



# PROMA 3XL



A



**PROMA 3XL**

2 3/8" x 32" x 48"

60mm x 812mm x 1219mm

10 rows
10.66 ft <sup>2</sup> per row
106.6 ft <sup>2</sup> per skid
40 lin.ft per skid
3050 lbs

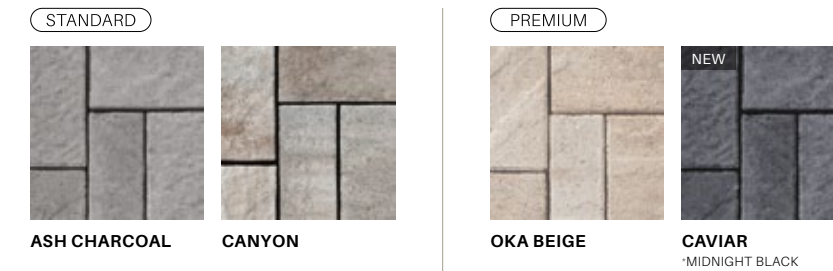
**PROMA 3XL**  
OKA BEIGE

*Elegant* and imposing, the Proma 3XL is the largest slab in the industry. This choice is sure to make a statement in your backyard.

\*Prestige: A color that must be meticulously maintained and used in a specific environment to preserve its appearance. See warranty.



# ZUKO GRANDE




---

12 rows

---

11.54 ft<sup>2</sup> per row

---

138.5 ft<sup>2</sup> per skid

---

141.65 lin.ft per skid

---

3280 lbs

---



For a *zen* and serene outdoor space, the Zuko Grande slab is the perfect choice.

ZUKO GRANDE  
ASH CHARCOAL

A



B



C



**ZUKO GRANDE**

1 15/16" x 5 7/8" x 11 3/4"

50mm x 149mm x 299mm

1 15/16" x 11 3/4" x 11 3/4"

50mm x 299mm x 299mm

1 15/16" x 11 3/4" x 17 11/16"

50mm x 299mm x 449mm



# Pavers

The choice  
for your residential or  
commercial *driveways*

Aspen

Capri

Proma Barrette

Proma

Proma XL

Proma Quadra

Proma 3XL

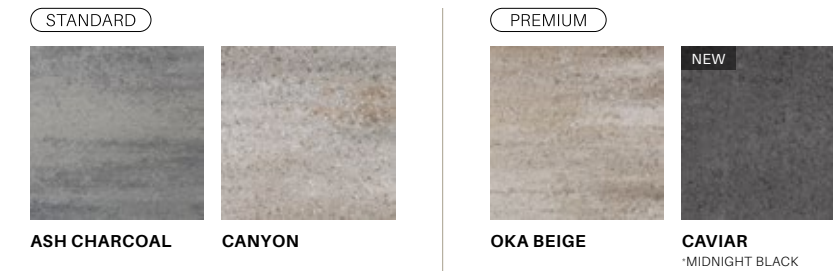
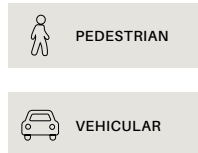
Venza

Zuko Grande





# ASPEN




---

9 rows

---

11.54 ft<sup>2</sup> per row

---

103.86 ft<sup>2</sup> per skid

---

106.24 lin.ft per skid

---

3475 lbs

---



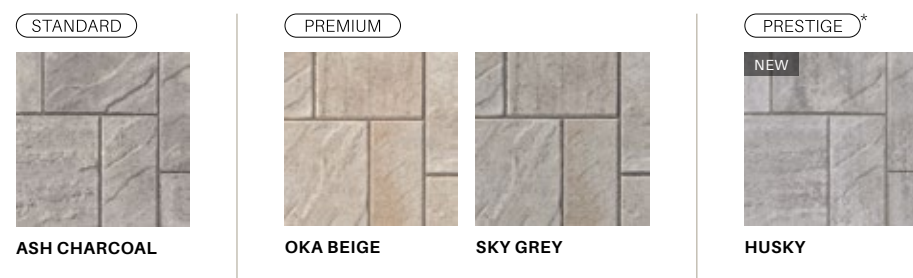
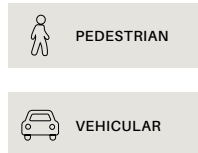
**ASPEN**  
ASH CHARCOAL



<b>A</b>	<b>B</b>	<b>C</b>
<hr/> <b>ASPEN</b> <hr/>		
<hr/> $2\ 3/4" \times 5\ 7/8" \times 11\ 3/4"$ <hr/>	<hr/> $2\ 3/4" \times 11\ 3/4" \times 11\ 3/4"$ <hr/>	<hr/> $2\ 3/4" \times 11\ 3/4" \times 17\ 11/16"$ <hr/>
<hr/> 70mm x 149mm x 299mm <hr/>	<hr/> 70mm x 299mm x 299mm <hr/>	<hr/> 70mm x 299mm x 449mm <hr/>



# CAPRI

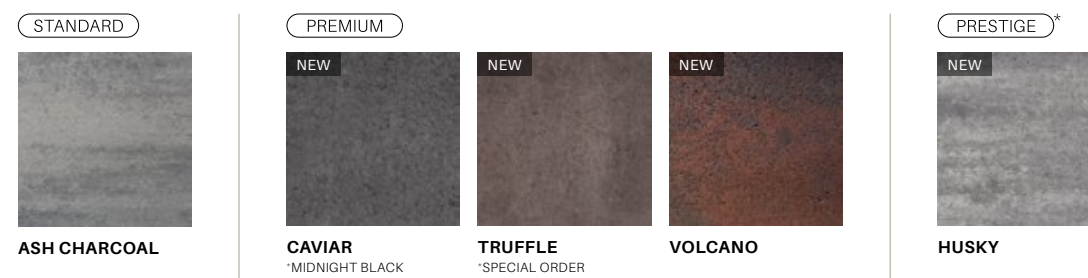
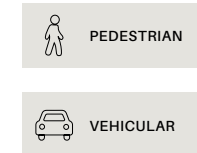


**CAPRI**  
OKA BEIGE

<b>A</b>	<b>B</b>	<b>C</b>
<b>CAPRI</b>		
3 9/16" x 8" x 16"	3 9/16" x 16" x 16"	3 9/16" x 16" x 24"
90mm x 203mm x 406mm	90mm x 406mm x 406mm	90mm x 406mm x 609mm

8 rows
10.66 ft <sup>2</sup> per row
85.33 ft <sup>2</sup> per skid
64 lin.ft per skid
3600 lbs

# PROMA BARRETTE



**PROMA BARRETTE**  
CAVIAR



<b>A</b>
<b>PROMA BARRETTE 90MM</b>
3 9/16" x 4" x 18"
90mm x 102mm x 457mm

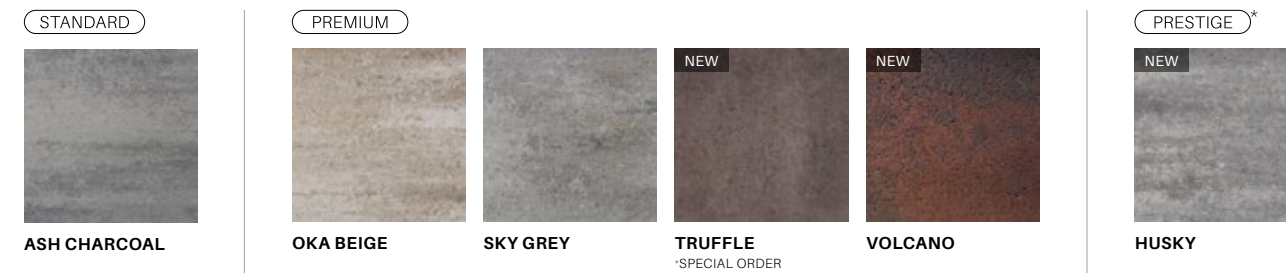
8 rows
20 units per row
160 units per skid
240 lin.ft per skid
3330 lbs

\*Prestige: A color that must be meticulously maintained and used in a specific environment to preserve its appearance. See warranty.



# PROMA

-  PEDESTRIAN
-  VEHICULAR






- 8 rows
- 10.66 ft<sup>2</sup> per row
- 85.33 ft<sup>2</sup> per skid
- 64 lin.ft per skid
- 3500 lbs



The Proma paver, with its smooth surface, offers a contemporary look.

It offers great *versatility*, as it can be used in both a modular or linear installation.


PROMA  
HUSKY

(A)		(B)		(C)	
<b>PROMA</b>		<b>PROMA</b>		<b>PROMA</b>	
3 9/16" x 8" x 16"		3 9/16" x 16" x 16"		3 9/16" x 16" x 24"	
90mm x 203mm x 406mm		90mm x 406mm x 406mm		90mm x 406mm x 609mm	

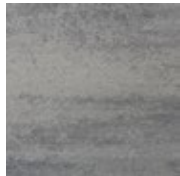


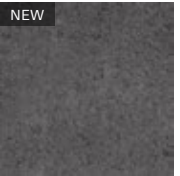

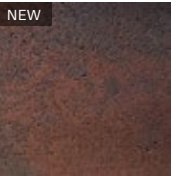
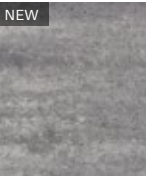
\*Prestige: A color that must be meticulously maintained and used in a specific environment to preserve its appearance. See warranty.



# PROMA XL

-  PEDESTRIAN
-  VEHICULAR



STANDARD	PREMIUM			PRESTIGE*		
						
ASH CHARCOAL	OKA BEIGE	SKY GREY	CAVIAR <small>*MIDNIGHT BLACK</small>	TRUFFLE <small>*SPECIAL ORDER</small>	VOLCANO	HUSKY



A



**PROMA XL**

3 9/16" x 16" x 32"

90mm x 406mm x 812mm



8 rows
10.66 ft <sup>2</sup> per row
85.33 ft <sup>2</sup> per skid
64 lin.ft per skid
3500 lbs

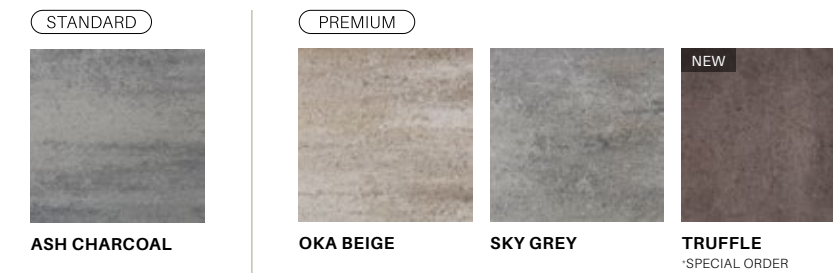
PROMA XL  
SKY GREY

\*Prestige: A color that must be meticulously maintained and used in a specific environment to preserve its appearance. See warranty.



# PROMA QUADRA

-  PEDESTRIAN
-  VEHICULAR



- 8 rows
- 7.1 ft<sup>2</sup> per row
- 56.8 ft<sup>2</sup> per skid
- 21.33 lin.ft per skid
- 2480 lbs

This amazing paver will surprise you with its colossal 32" x 32" format.

This modern paver will justify your investment and make it a lasting and *remarkable* project.



**PROMA QUADRA**  
ASH CHARCOAL  
**PROMA XL**  
CAVIAR

A



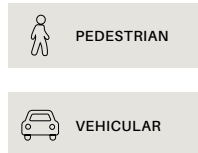
**PROMA QUADRA**

3 9/16" x 32" x 32"

90mm x 812mm x 812mm



# PROMA 3XL



**PROMA 3XL**  
ASH CHARCOAL

A



**PROMA 3XL**

3 9/16" x 32" x 48"

90mm x 812mm x 1219mm

---

8 rows

---

10.66 ft<sup>2</sup> per row

---

85.33 ft<sup>2</sup> per skid

---

32 lin.ft per skid

---

3570 lbs

---

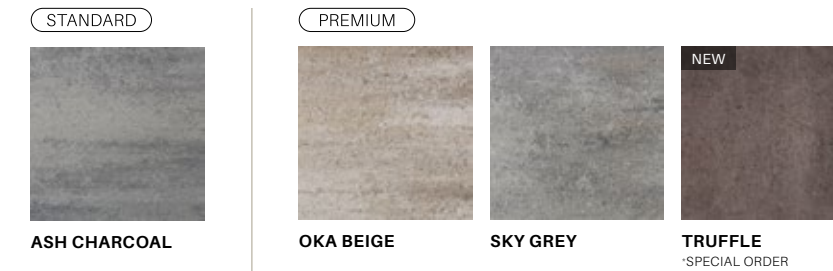
Elegant and Imposing, this 32" x 48" paver will help create *spectacular* parking lots.

*Design idea :*

Combine the various pavers available in the Proma collection for a stunning result !

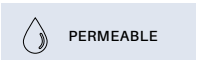
**PROMA 3XL, PROMA QUADRA & PROMA XL**  
OKA BEIGE

**PROMA BARRETTE**  
CAVIAR





# VENZA



PERMEABLE



PEDESTRIAN



VEHICULAR



**VENZA**  
ASH CHARCOAL

A



**VENZA**

2 3/4" x 5 7/8" x 1 1/4"

70mm x 149mm x 299mm

---

9 rows

---

11.51 ft<sup>2</sup> per row

---

103.59 ft<sup>2</sup> per skid

---

211.5 lin.ft per skid

---

3335 lbs

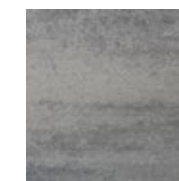
---

This permeable and *versatile* paver is ideal for your commercial projects.

Venza can be used for both your patio and your entrance.

**VENZA**  
ASH CHARCOAL

STANDARD

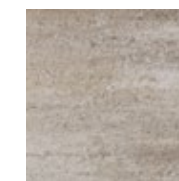


ASH CHARCOAL



CANYON

PREMIUM



OKA BEIGE



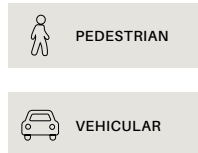
NEW

CAVIAR  
MIDNIGHT BLACK





# ZUKO GRANDE



**ZUKO GRANDE**  
ASH CHARCOAL

A



B



C



**ZUKO GRANDE**

2 3/4" x 5 7/8" x 11 3/4"

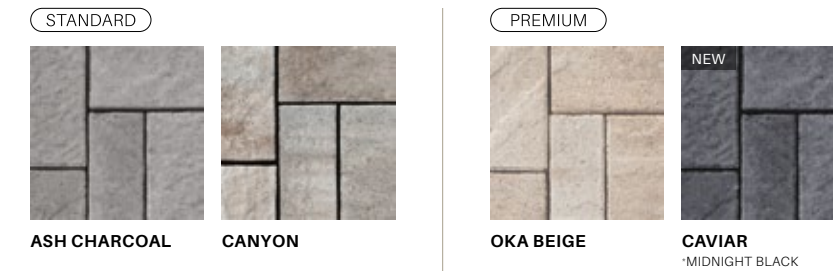
70mm x 149mm x 299mm

2 3/4" x 11 3/4" x 11 3/4"

70mm x 299mm x 299mm

2 3/4" x 11 3/4" x 17 11/16"

70mm x 299mm x 449mm




---

9 rows

---

11.54 ft<sup>2</sup> per row

---

103.86 ft<sup>2</sup> per skid

---

106.24 lin.ft per skid

---

3475 lbs

---

The Zuko Grande paver is the *perfect* fusion of modern and traditional styles.

**ZUKO GRANDE**  
ASH CHARCOAL





# Accessories

Complementary products to *complete* your projects

- Ora Wall
- Solino Wall
- Ora Step
- Proma Step
- Solino Column
- Solino Coping

- Proma XL Coping
- Spherik Coping
- Viva Grande Coping
- Okuta Path Stone NEW
- Garden Path Stone
- Japanese Path Stone



ORA STEP  
MIST  
PROMA XL &  
PROMA QUADRA  
MIST



# ORA

WALL



**ORA WALL**  
SKY GREY

A

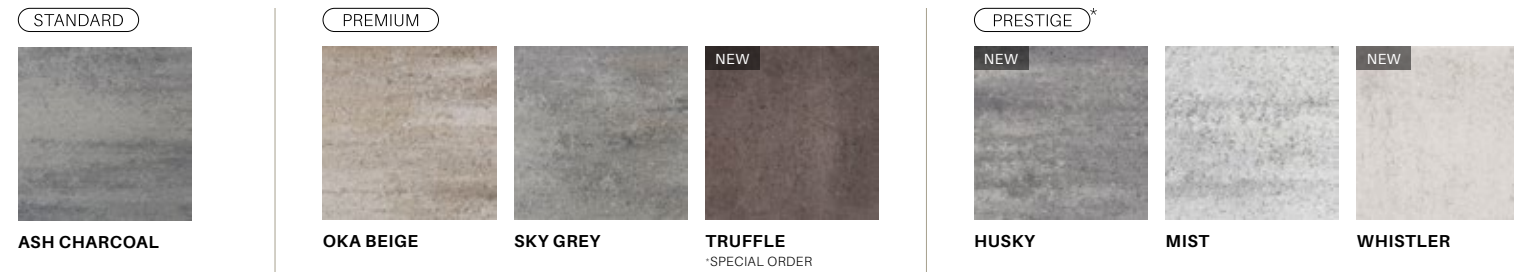


**ORA WALL**

7 1/8" x 9 1/16" x 18 1/8"

180mm x 230mm x 460mm

4 rows
7.13 ft <sup>2</sup> per row
28.5 ft <sup>2</sup> per skid
2755 lbs



**ORA WALL**  
WHISTLER

\*Prestige: A color that must be meticulously maintained and used in a specific environment to preserve its appearance. See warranty.







# SOLINO

WALL



SOLINO WALL | TEXTURED SIDE  
ASH CHARCOAL

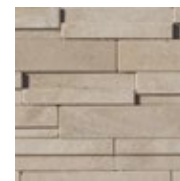
(A)		(B)		(C)		(D)	
<b>SOLINO WALL</b>							
<u>3 9/16" x 9 1/2" x 12"</u>		<u>3 9/16" x 9 1/2" x 16"</u>		<u>3 9/16" x 9 1/2" x 18"</u>		<u>3 9/16" x 9 1/2" x 20"</u>	
<u>90mm x 241mm x 305mm</u>		<u>90mm x 241mm x 406mm</u>		<u>90mm x 241mm x 457mm</u>		<u>90mm x 241mm x 508mm</u>	

STANDARD

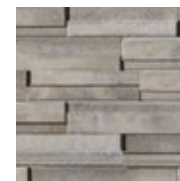


ASH CHARCOAL

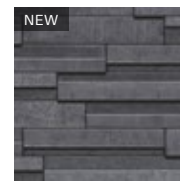
PREMIUM



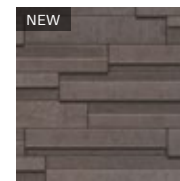
OKA BEIGE



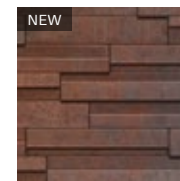
SKY GREY



CAVIAR  
\*MIDNIGHT BLACK

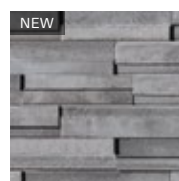


TRUFFLE  
\*SPECIAL ORDER

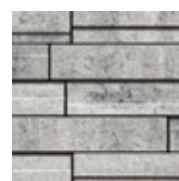


VOLCANO

PRESTIGE\*



HUSKY



MIST

7 rows

4.43 ft<sup>2</sup> per row

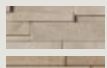
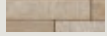
31 ft<sup>2</sup> per skid

3350 lbs

## Reversible

One product,  
two installation alternatives!  
Infinite possibilities.

### DOUBLE SIDED

Textured side:   
Smooth side: 

(E)



3 9/16" x 9 1/2" x 24"

90mm x 241mm x 609mm



SOLINO WALL | SMOOTH SIDE  
SKY GREY

\*Prestige: A color that must be meticulously maintained and used in a specific environment to preserve its appearance. See warranty.



# Design your own fire pit

Designing your own outdoor fire pit with premium Rinox products provides a unique experience in customization and sophistication.

Simply choose a retaining wall from our selection to create the structure forming the base of the fire pit. Add finishing slabs on top of the retaining wall for the final touch, and achieve a personalized fire pit. Also, dare to opt for different product colors for a unique look.



**SOLINO WALL FIRE PIT**  
ASH CHARCOAL



**ORA WALL FIRE PIT**  
SKY GREY



**ORA STEP FIRE PIT**  
OKA BEIGE

DISCOVER OUR LOOKBOOK:



RINOX.COM



# ORA

STEP



**ORA STEP**  
SKY GREY

A

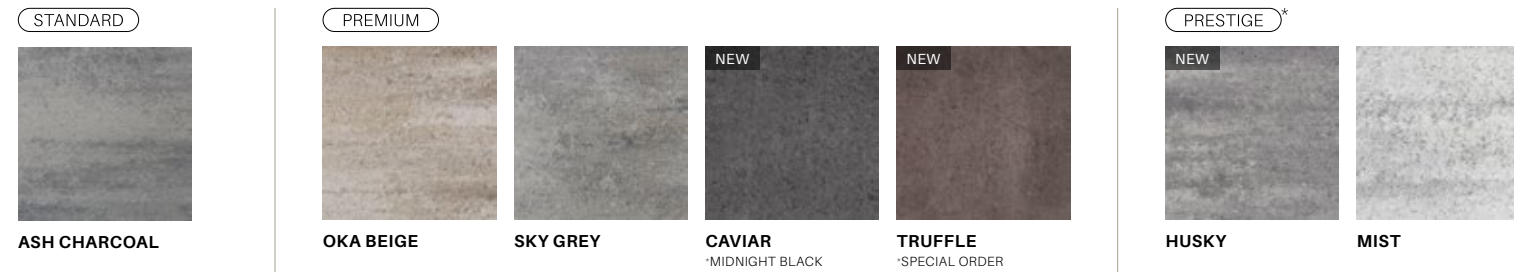


**ORA STEP**

7 1/8" x 15 3/4" x 48"

180mm x 400mm x 1219mm

- \_\_\_\_\_
- 3 rows
- \_\_\_\_\_
- 2 units per row
- \_\_\_\_\_
- 6 units per skid
- \_\_\_\_\_
- 2825 lbs



**ORA STEP**  
MIST

The chic and *sophisticated* look of this step is undeniable.

\*Prestige: A color that must be meticulously maintained and used in a specific environment to preserve its appearance. See warranty.



# The *Versatile* Ora step

The modern look of the Ora step perfectly aligns with current trends.

It comes as no surprise that this product is a must-have in all landscaping projects due to its versatility. The Ora step stands out not only for its trendy design, but also for its durability and adaptability. It can be used both a landing step and as a retaining wall.

DISCOVER OUR LOOKBOOK:



RINOX.COM



**ORA STEP**  
MIST  
**PROMA**  
HUSKY



# PROMA



**PROMA STEP**  
SKY GREY

A



**PROMA STEP**

2 3/8" x 16" x 32"

60mm x 406mm x 812mm

B



**RISER**

2 3/4" x 4 5/8" x 16"

60mm x 118mm x 406mm

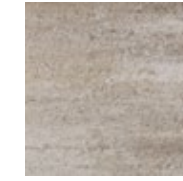
6 rows
5.33 lin.ft per row
32 lin.ft per skid
1550 lbs

STANDARD

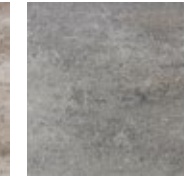


**ASH CHARCOAL**

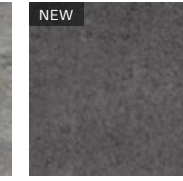
PREMIUM



**OKA BEIGE**



**SKY GREY**



**CAVIAR**  
\*MIDNIGHT BLACK



**TRUFFLE**  
\*SPECIAL ORDER

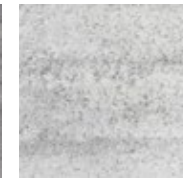


**VOLCANO**

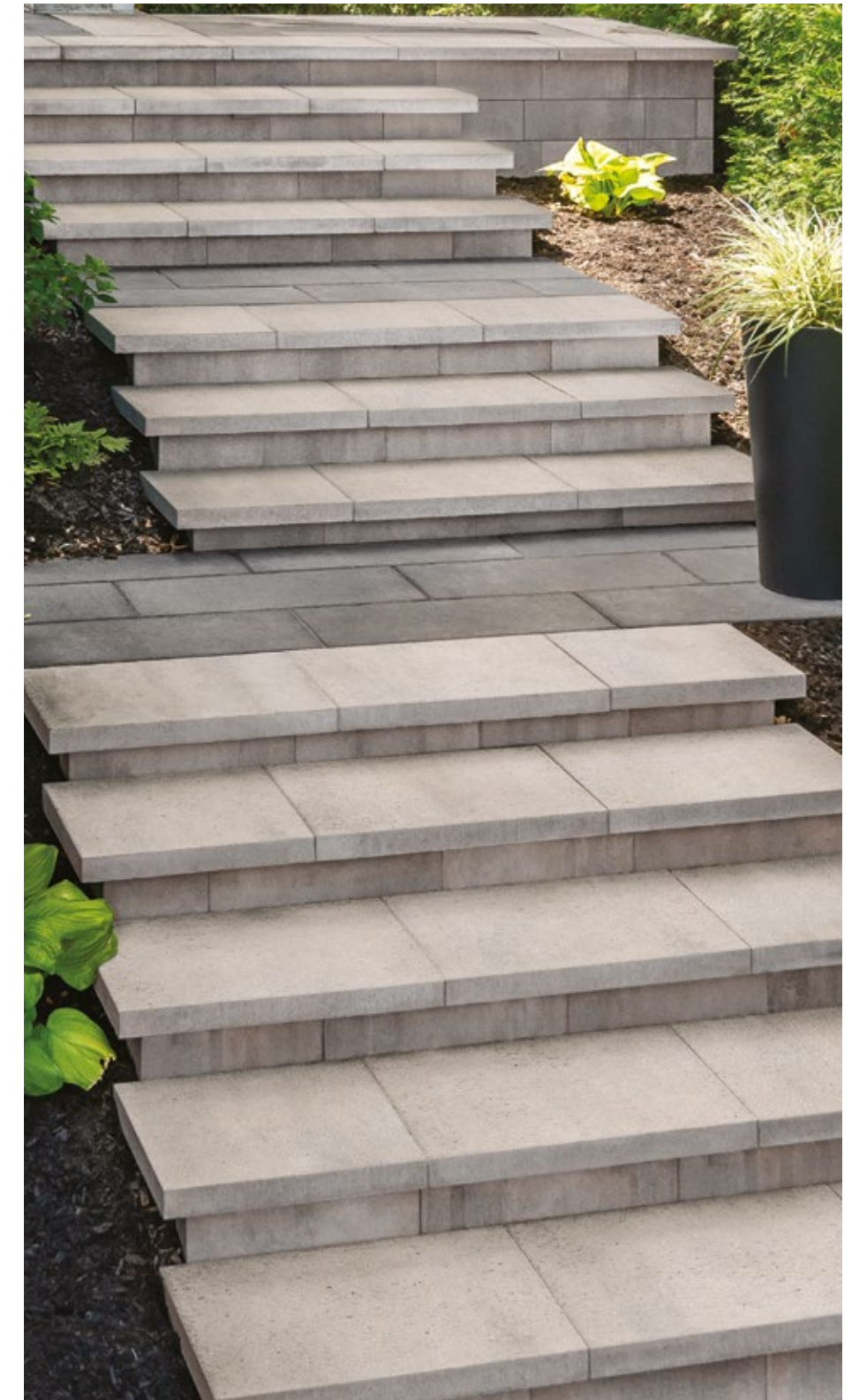
PRESTIGE\*



**HUSKY**



**MIST**



**PROMA STEP**  
SKY GREY

The Proma step and riser is distinguished by its modern look and *smooth* finish.

This product matches the Proma paver and slab from Rinox's landscape collection.

\*Prestige: A color that must be meticulously maintained and used in a specific environment to preserve its appearance. See warranty.

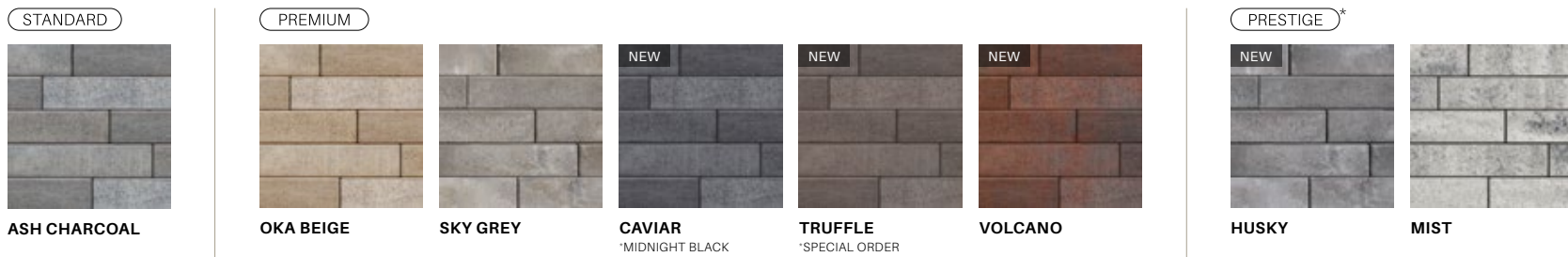


# SOLINO

COLUMN



SOLINO COLUMN  
ASH CHARCOAL



A

**SOLINO COLUMN**

42 1/2" x 30" x 30"

1080mm x 762mm x 762mm

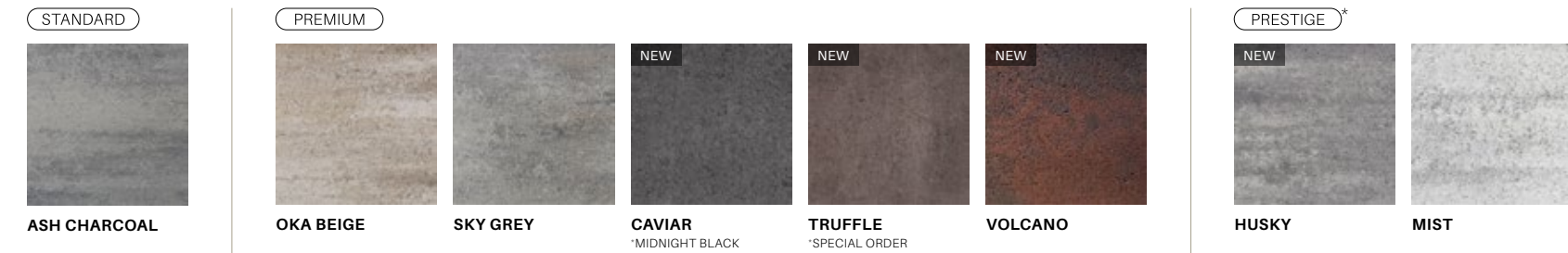
6 rows  
12 lin.ft per row  
72 lin.ft per skid  
3125 lbs

# SOLINO

COPING



SOLINO COPING & WALL  
ASH CHARCOAL



A

**SOLINO COPING**

3 9/16" x 12" x 18"

90mm x 305mm x 457mm

6 rows  
12 lin.ft per row  
72 lin.ft per skid  
3125 lbs

\*Prestige: A color that must be meticulously maintained and used in a specific environment to preserve its appearance. See warranty.



# PROMA XL

COPING



PROMA XL COPING  
CAVIAR

A



**PROMA XL COPING**

2 3/8" x 16" x 32"

60mm x 406mm x 812mm

8 rows
8 lin.ft per row
64 lin.ft per skid
2455 lbs

STANDARD

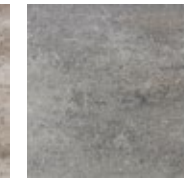


ASH CHARCOAL

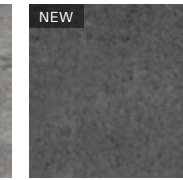
PREMIUM



OKA BEIGE



SKY GREY



CAVIAR  
\*MIDNIGHT BLACK



TRUFFLE  
\*SPECIAL ORDER

PRESTIGE\*



HUSKY



MIST



WHISTLER



PROMA XL COPING  
CAVIAR

This coping is the *ideal* pool coping to combine with the Proma collection.

\*Prestige: A color that must be meticulously maintained and used in a specific environment to preserve its appearance. See warranty.



# SPHERIK

COPING

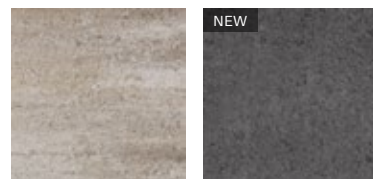


STANDARD



ASH CHARCOAL CANYON

PREMIUM



OKA BEIGE CAVIAR  
\*MIDNIGHT BLACK

SPHERIK  
CAVIAR

A



SPHERIK

3 1/8" x 11 7/8" x 10"

80mm x 300mm x 254mm

3 rows

27.5 lin.ft per row

82.5 lin.ft per skid

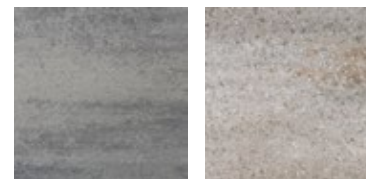
2885 lbs

# VIVA GRANDE

COPING

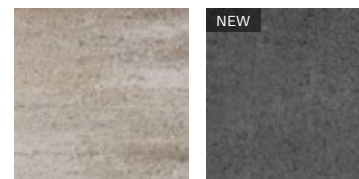


STANDARD



ASH CHARCOAL CANYON

PREMIUM



OKA BEIGE CAVIAR  
\*MIDNIGHT BLACK

VIVA GRANDE  
ASH CHARCOAL

A



VIVA GRANDE

2 3/4" x 11 3/8" x 23 1/4"

70mm x 290mm x 590mm

9 rows

11.6 lin.ft per row

104.4 lin.ft per skid

3300 lbs



NEW

PATH STONE

# OKUTA



OKUTA PATH STONE  
HUSKY

A



OKUTA

2 3/8" x 12 3/4" x 47 1/2"

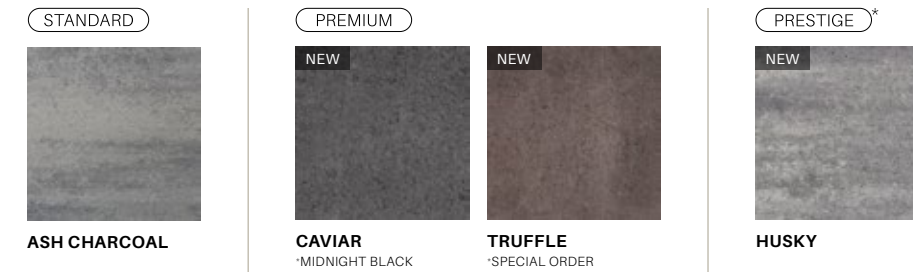
60mm x 324mm x 1207mm

6 rows

12 lin.ft per row

72 lin.ft per skid

2200 lbs



*Unique design!*

This new path stone is perfect for adding a playful and original touch to your landscaping projects.

OKUTA PATH STONE  
HUSKY & CAVIAR



\*Prestige: A color that must be meticulously maintained and used in a specific environment to preserve its appearance. See warranty.

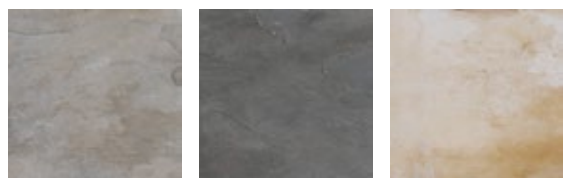


# GARDEN

PATH STONE



STANDARD



MARBLE GREY SMOKED CHARCOAL PORTOBELLO BEIGE

**GARDEN PATH STONE**  
MARBLE GREY

A



**GARDEN PATH STONE**

3 9/16" x 18" x 14"

90mm x 457mm x 356mm

10 rows

6 units per row

60 units per skid

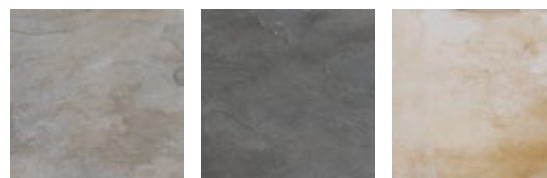
2236 lbs

# JAPANESE

PATH STONE



STANDARD



MARBLE GREY SMOKED CHARCOAL PORTOBELLO BEIGE

**JAPANESE PATH STONE**  
MARBLE GREY

A



**JAPANESE PATH STONE**

3 9/16" x 30" x 20"

90mm x 762mm x 508mm

1 row

14 units per skid

1285 lbs





# Discover the Rinox Group

The Rinox Group brings together companies offering products for the exterior of your homes. The ultimate goal of the Rinox Group is to create beautiful spaces for your outdoor settings. Making your dream projects a reality becomes possible thanks to these durable and exceptional quality products.



[RINOXGROUP.COM](http://RINOXGROUP.COM)



## Our *divisions:*

**RINOX**  
Concrete products manufacturer

**RIALUX**  
Aluminum siding

**AQUARINO x DOLPHIN**  
Inground fiberglass pools





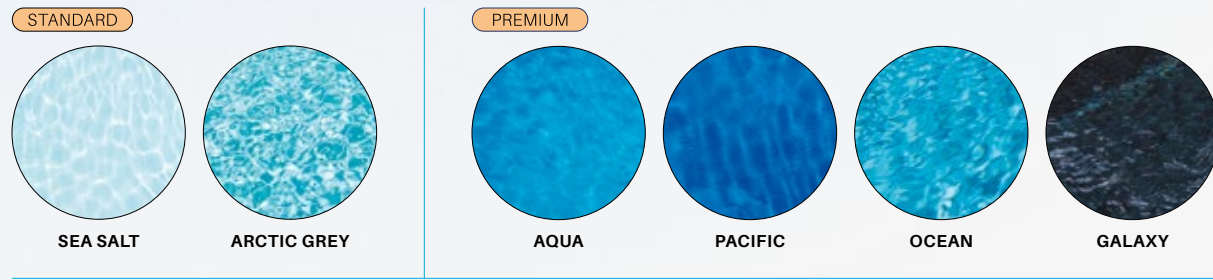
# Inground fiberglass pools

Aquarino x Dolphin is the largest manufacturer of fiberglass pools in Canada. Our experienced staff members proudly manufacture our pools to meet the demands of our northern climate, ensuring quality checks throughout all stages of the manufacturing process to comply with industry standards.

Discover Aquarino x Dolphin now, a division of the Rinox Group.



AQUARINO 1224  
ARCTIC GREY



See all models:



DOLPHIN OASIS  
AQUA

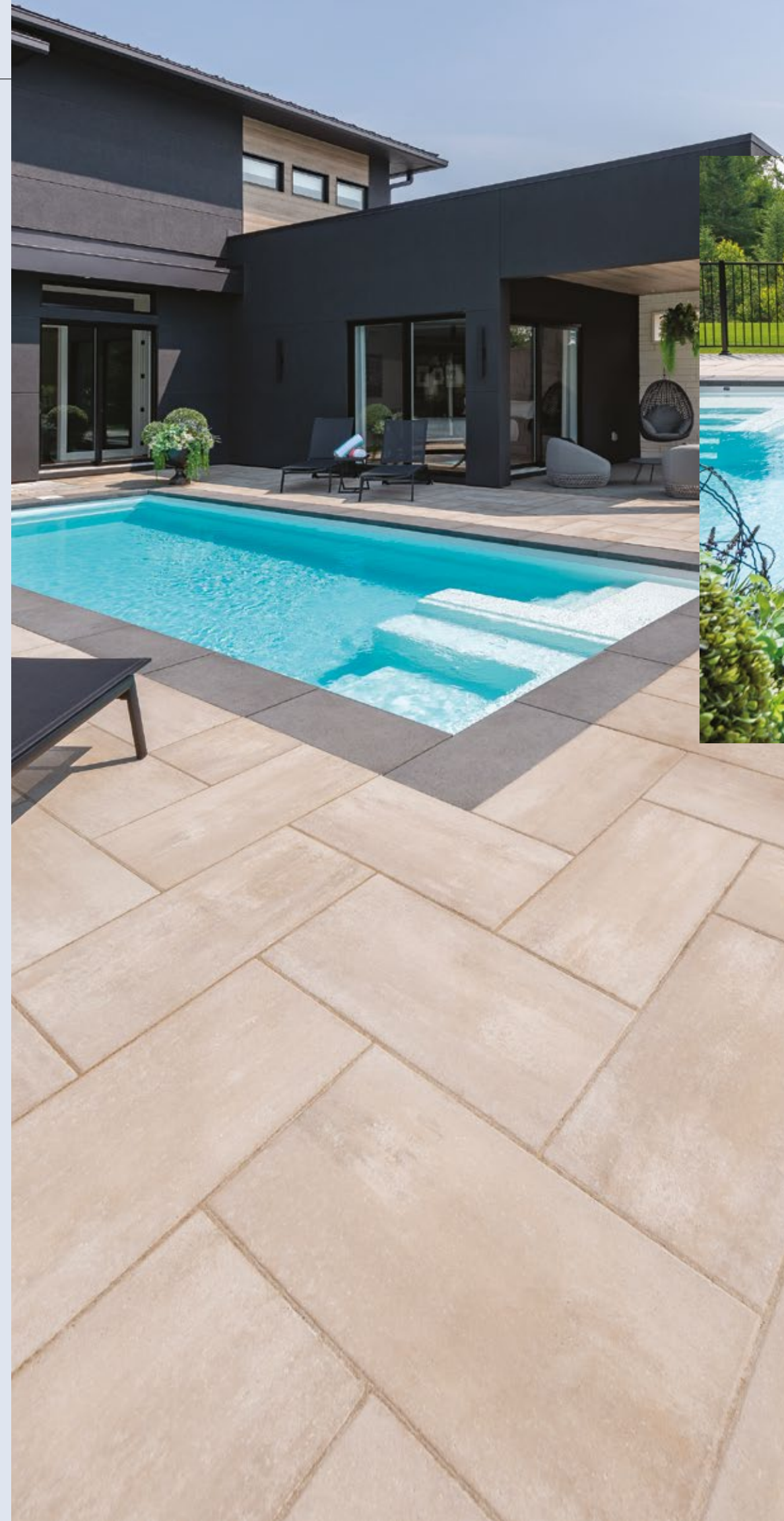




# Grace your project with *distinction*

The distinction of an outdoor space is defined by the choice of materials, decorative elements, and the unparalleled finish of its execution.

The Aquarino inground pool lounge model, serves as the highlight feature of this backyard. Surrounding it, a complete layout of Rinox products has been installed, seamlessly complementing this prestigious project. Every detail of this project contributes to creating a carefully crafted atmosphere, where the quality of Rinox materials blends perfectly with the modern look of an Aquarino pool.



**AQUARINO 1232 LOUNGE**  
SEA SALT  
**PROMA XL COPING**  
CAVIAR  
**PROMA XL**  
OKA BEIGE



**PROMA QUADRA**  
SKY GREY  
**AQUARINO 1224**  
ARCTIC GREY



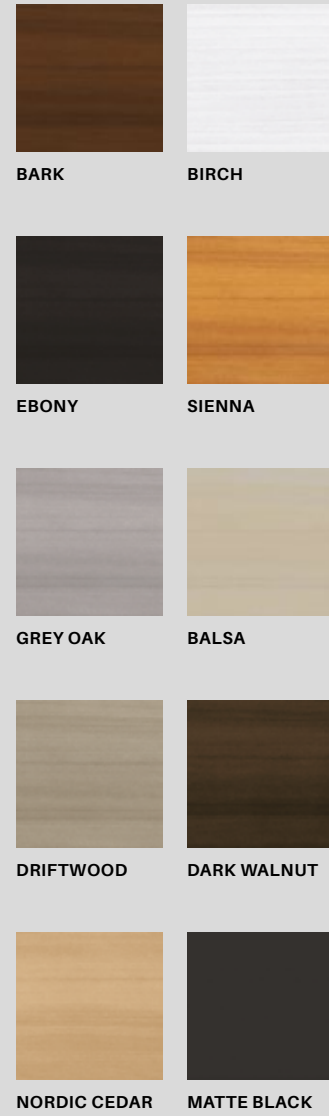
# RIALUX

ALUMINUM SIDING

Composed entirely of premium aluminum, Rialux exterior siding panels stand out for their ease of installation, their light weight properties and rust-proof material. They are high quality products that add the perfect finishing touch to your projects.

Discover Rialux now, a division of the Rinox Group.

RIALUX.COM



TIMBERLAND  
EBONY



BOLTON  
GREY OAK

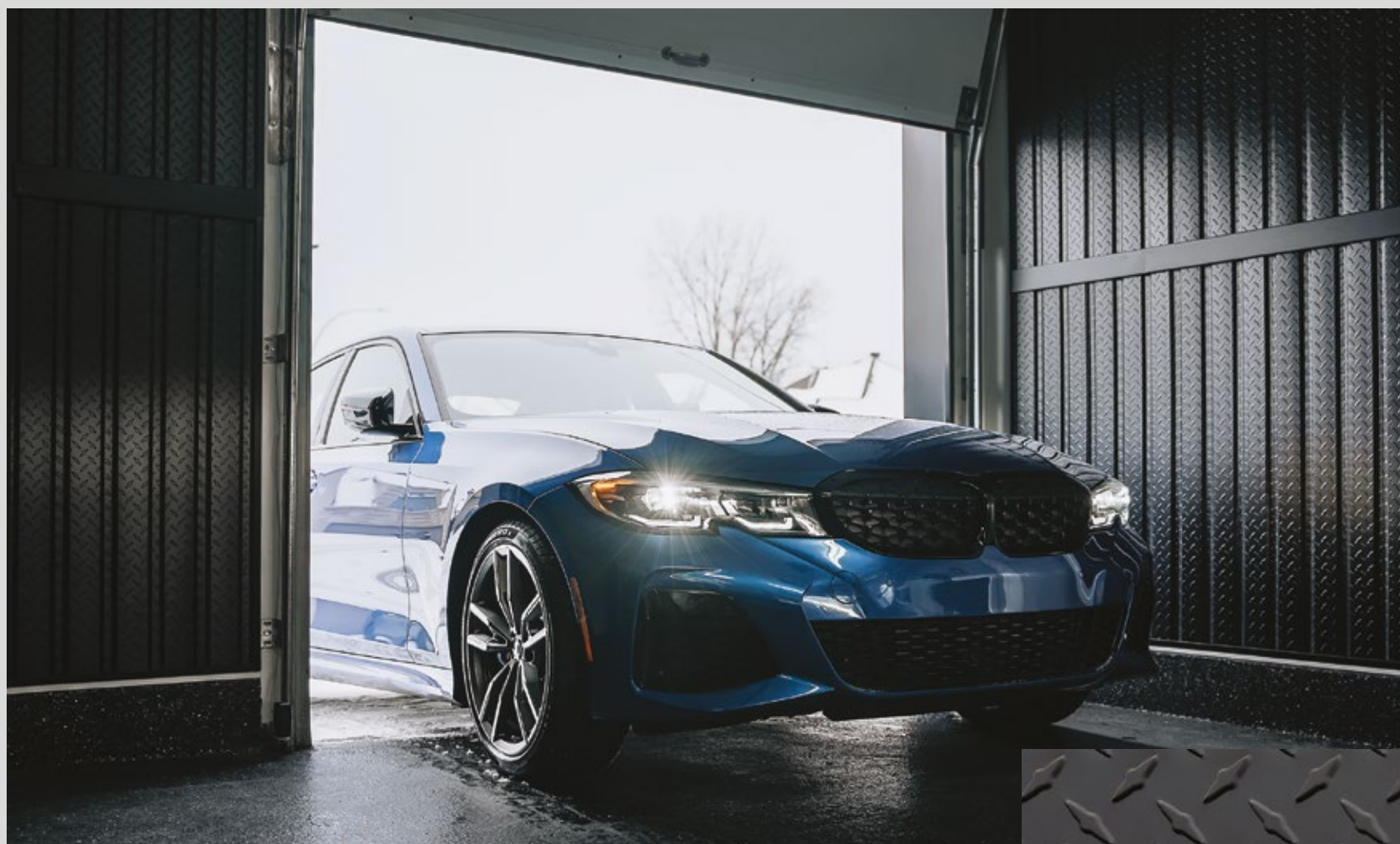


TIAGO  
EBONY



NEW

# Garage aluminum wall panels



X14  
CARBON BLACK

The panels are made of premium aluminum and are offered in the colors titanium grey and carbon black. They are lightweight, water resistant and rust proof, making the perfect addition to your garage.



GRGX.COM



Garage-X offers a line of checker-plate effect aluminum wall panels specially designed to enhance the appearance of garages. These panels are ideal for a simple, do-it-yourself installation project aimed at elevating the aesthetics of your garage.



X14  
TITANIUM GREY





# Color chart

## Slabs

### Capri



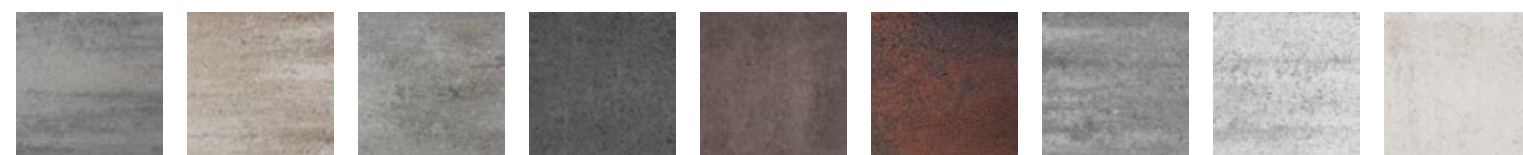
ASH CHARCOAL OKA BEIGE SKY GREY HUSKY

### Proma



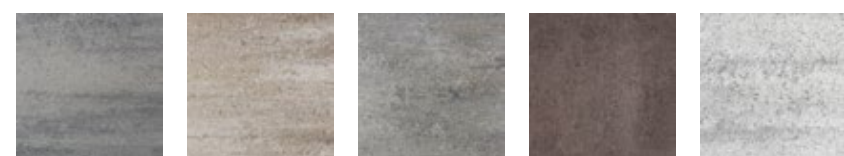
ASH CHARCOAL OKA BEIGE SKY GREY TRUFFLE\* VOLCANO HUSKY MIST

### Proma XL



ASH CHARCOAL OKA BEIGE SKY GREY CAVIAR\* TRUFFLE\* VOLCANO HUSKY MIST WHISTLER

### Proma Quadra and Proma 3XL



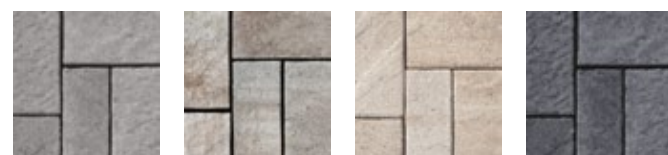
ASH CHARCOAL OKA BEIGE SKY GREY TRUFFLE\* MIST

### Aspen



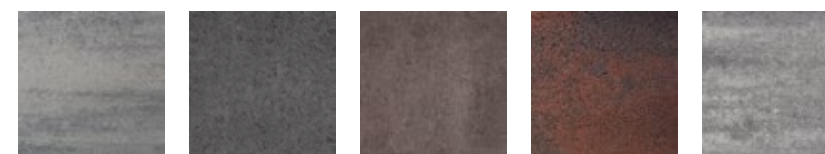
ASH CHARCOAL CANYON OKA BEIGE CAVIAR\*

### Zuko Grande



ASH CHARCOAL CANYON OKA BEIGE CAVIAR\*

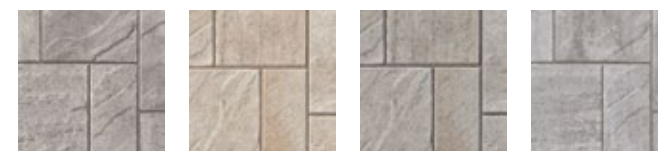
### Proma Barrette (Slab and Paver)



ASH CHARCOAL CAVIAR\* TRUFFLE\* VOLCANO HUSKY

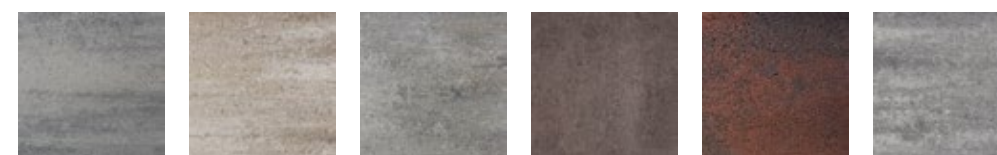
## Pavers

### Capri



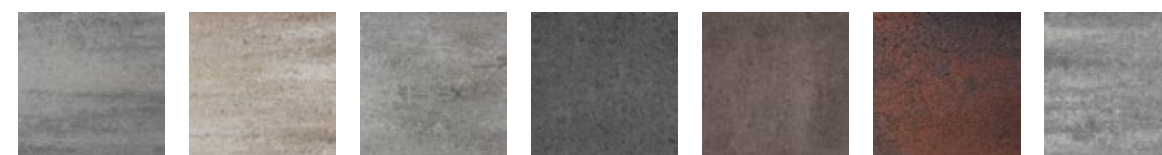
ASH CHARCOAL OKA BEIGE SKY GREY HUSKY

### Proma



ASH CHARCOAL OKA BEIGE SKY GREY TRUFFLE\* VOLCANO HUSKY

### Proma XL



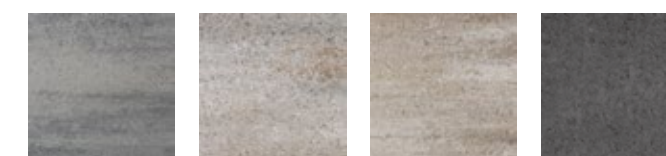
ASH CHARCOAL OKA BEIGE SKY GREY CAVIAR\* TRUFFLE\* VOLCANO HUSKY

### Proma Quadra and Proma 3XL



ASH CHARCOAL OKA BEIGE SKY GREY TRUFFLE\*

### Venza



ASH CHARCOAL CANYON OKA BEIGE CAVIAR\*

### Aspen



ASH CHARCOAL CANYON OKA BEIGE CAVIAR\*

### Zuko Grande



ASH CHARCOAL CANYON OKA BEIGE CAVIAR\*

\*Important: The Truffle color is available by special order only.

\*The Caviar color will eventually replace the Midnight Black color. Midnight Black is available while supplies last.



## Landscaping accessories

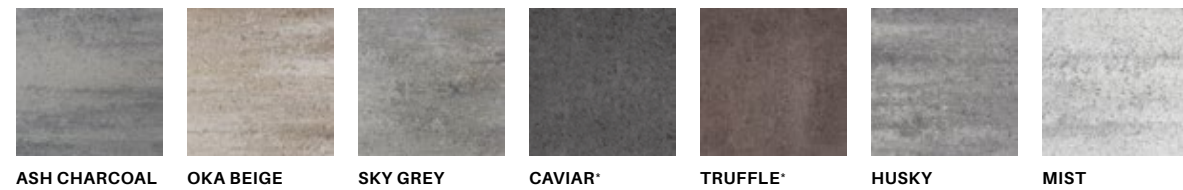
### *Ora Wall*



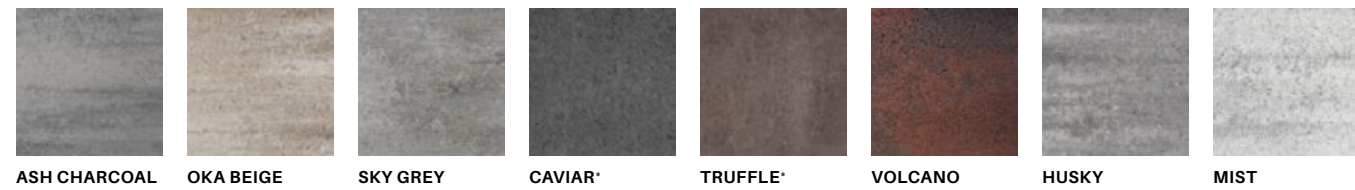
### *Solino Wall*



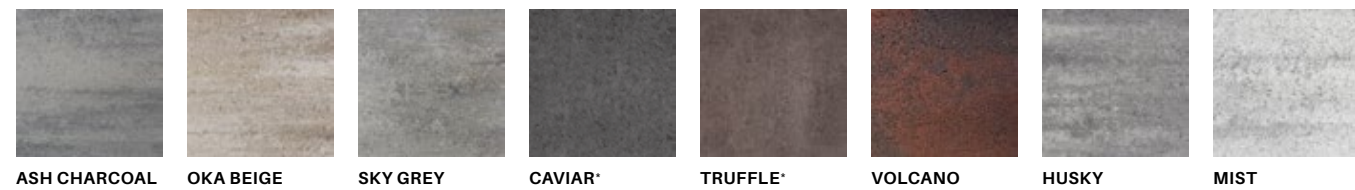
### *Ora Step*



### *Proma Step*



### *Solino Column and Coping*



## IMPORTANT

The colors of the products shown are as accurate as the photographs and printing process allow. We strongly suggest using an actual sample to make your color choice.

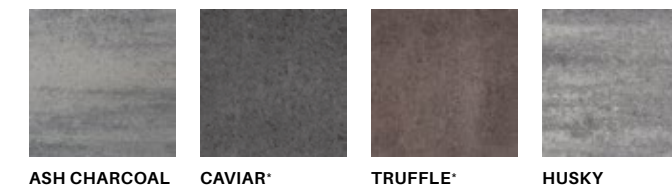
### *Proma XL Coping*



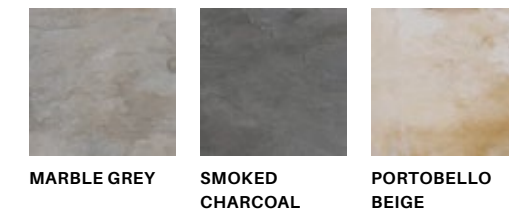
### *Spherik and Viva Grande*



### *Okuta Path stone*



### *Garden and Japanese Path stone*



\*Important: The Truffle color is available by special order only.

\*The Caviar color will eventually replace the Midnight Black color. Midnight Black is available while supplies last.



## Technical information chart

### Slabs

PRODUCTS	ROWS PER SKID	PER ROW	PER SKID	LINEAR FOOT	WEIGHT
CAPRI	10 rows	10.66 ft <sup>2</sup> per row	106.6 ft <sup>2</sup> per skid	80 lin.ft per skid	3000 lbs
PROMA BARRETTE	9 rows	20 units per row	160 units per skid	00 lin.ft per skid	2260 lbs
PROMA	10 rows	10.66 ft <sup>2</sup> per row	106.6 ft <sup>2</sup> per skid	80 lin.ft per skid	3000 lbs
PROMA XL	10 rows	10.66 ft <sup>2</sup> per row	106.6 ft <sup>2</sup> per skid	80 lin.ft per skid	3050 lbs
PROMA QUADRA	12 rows	7.1 ft <sup>2</sup> per row	85.2 ft <sup>2</sup> per skid	32 lin.ft per skid	2440 lbs
PROMA 3XL	10 rows	10.66 ft <sup>2</sup> per row	106.6 ft <sup>2</sup> per skid	40 lin.ft per skid	3050 lbs
ASPEN	12 rows	11.54 ft <sup>2</sup> per row	138.5 ft <sup>2</sup> per skid	141.65 lin.ft per skid	3280 lbs
ZUKO GRANDE	12 rows	11.54 ft <sup>2</sup> per row	138.5 ft <sup>2</sup> per skid	141.65 lin.ft per skid	3280 lbs

### Pavers

PRODUCTS	ROWS PER SKID	PER ROW	PER SKID	LINEAR FOOT	WEIGHT
CAPRI	8 rows	10.66 ft <sup>2</sup> per row	85.33 ft <sup>2</sup> per skid	64 lin.ft per skid	3600 lbs
PROMA BARRETTE	9 rows	20 units per row	160 units per skid	00 lin.ft per skid	3330 lbs
PROMA	8 rows	10.66 ft <sup>2</sup> per row	85.33 ft <sup>2</sup> per skid	64 lin.ft per skid	3500 lbs
PROMA XL	8 rows	10.66 ft <sup>2</sup> per row	85.33 ft <sup>2</sup> per skid	64 lin.ft per skid	3500 lbs
PROMA QUADRA	8 rows	7.1 ft <sup>2</sup> per row	56.8 ft <sup>2</sup> per skid	21.33 lin.ft per skid	2480 lbs
PROMA 3XL	8 rows	10.66 ft <sup>2</sup> per row	85.33 ft <sup>2</sup> per skid	32 lin.ft per skid	3570 lbs
ASPEN	9 rows	11.54 ft <sup>2</sup> per row	103.86 ft <sup>2</sup> per skid	106.24 lin.ft per skid	3475 lbs
VENZA	9 rows	11.51 ft <sup>2</sup> per row	103.59 ft <sup>2</sup> per skid	211.5 lin.ft per skid	3335 lbs
ZUKO GRANDE	9 rows	11.54 ft <sup>2</sup> per row	103.86 ft <sup>2</sup> per skid	106.24 lin.ft per skid	3475 lbs

### Accessories

PRODUCTS	ROWS PER SKID	PER ROW	PER SKID	WEIGHT
ORA WALL	4 rows	7.13 ft <sup>2</sup> per row	28.5 ft <sup>2</sup> per skid	2755 lbs
SOLINO WALL	7 rows	4.43 ft <sup>2</sup> per row	31 ft <sup>2</sup> per skid	3350 lbs
ORA STEP	3 rows	2 units per row	6 units per skid	2825 lbs
PROMA STEP	6 rows	5.33 lin.ft per row	32 lin.ft per skid	1550 lbs
SOLINO COLUMN	6 rows	12 lin.ft per row	72 lin.ft per skid	3125 lbs
SOLINO COPING	6 rows	12 lin.ft per row	72 lin.ft per skid	3125 lbs
PROMA XL COPING	8 rows	8 lin.ft per row	64 lin.ft per skid	2455 lbs
SPHERIK COPING	3 rows	27.5 lin.ft per row	82.5 lin.ft per skid	2885 lbs
VIVA GRANDE COPING	9 rows	11.6 lin.ft per row	104.4 lin.ft per skid	3300 lbs
OKUTA PATH STONE	6 rows	12 lin.ft per row	72 lin.ft per skid	2200 lbs
GARDEN PATH STONE	10 rows	6 units per row	60 units per skid	2236 lbs
JAPANESE PATH STONE	1 row	-	14 units per skid	1285 lbs

NEW

# Home Exterior *Design* Tool

Explore the tool designed to help you visualize Rinox masonry products and their exquisite range of colors harmoniously blending with Rialux aluminum products. Select your desired scene and the specific products you're considering, allowing you to gain invaluable insights to confidently make your final decision.



TRY OUR HOME EXTERIOR DESIGN TOOL:







PROMA XL  
OKA BEIGE

# For your 3D *architectural* plans

These new textures, created with a one-of-a-kind product scanning technology, will offer the most realistic renderings in a fast and efficient way.

Create 3D designs that will impress like never before.

**DISCOVER OUR 3D TEXTURES:**



# Color *samples*

Order your samples  
directly online on  
our Website!

**ORDER THEM ON OUR RESOURCE CENTER:**





**25** years **Xclusive**  
**PROTECTION**



*Transferable 25-year*  
protection of our product  
with the installation\*.

RINOX.COM



REGISTER YOUR PURCHASE ONLINE:

 **RINOX**

Also see our  
Masonry & Alternative  
Masonry *catalog*





# Would you like more design *ideas*?

View our *Lookbook* at [RINOX.COM](http://RINOX.COM)



Follow us



@RinoxInc



@rinoxinc



@rinoxincorporated



Rinox Inc



@rinoxgroup



PROMA XL  
WHISTLER



Thanks to the Printreleaf certification program, Rinox has participated in the reforestation of the planet.





#### **DIVISIONS OF THE RINOX GROUP**

RINOX — Concrete products manufacturer

RIALUX — Aluminum siding

AQUARINO — Inground fiberglass pools

DOLPHIN POOLS — Fiberglass pools

---

**RINOX.COM**

**RIALUX.COM**

**AQUARINO.CA**

**DOLPHIN-POOLS.CA**